

ACOTW™

www.ArrowheadCollectingOnTheWeb.com

Volume III, Number 1

January 2011

This Month We Look Up From The Cold, Snowy Ground To Examine Hard Rock Artwork, Over-The-Horizon Sea Faring In The Depths Of Antiquity & A Possible New Human Species.

Thank you for subscribing to our newsletter, "Arrowhead Collecting On The Web".

I hope you enjoyed the recent edition, Volume II, Number 12, of our digital e-magazine, the December, 2010 issue.

"Arrowhead Collecting On The Web" provides an on-going series of articles and graphic presentations of information related to the many different aspects of discovering and learning about artifacts of previous cultures found today.

Now with over 1,250 monthly subscribers across North America, plus South America, Africa, Europe, Australia and Asia, with this edition, we are beginning our third calendar year, Volume III. This new January 2011 edition addresses the following topics, among others:

- When Kelvin O'Hara in New Zealand got a set of "typical" North American Indian arrowheads from an eBay seller, the points were made of clay. He asked us for new stone reproductions to make an archery exhibit far more realistic at his family's game farm (see page 3).
- Walk the shores of the Potomac River with a reader who first found shark teeth



Petroglyph National Monument is one of several exceptional sites for viewing the "Rock Art of the Ancients". This national monument is right on the western edge of Albuquerque. There are about 24,000 images here, mostly from prehistoric Pueblo peoples starting about 500 AD, but also some made by Spanish settlers who saw all the pictures on the rocks and decided to add their own. Some are even the cattle brands of the early ranchers. For other extensive petroglyph sites, see pages 9-11.

- and now quests to discover Indian artifacts in southern Maryland (see pages 7-8).
 - Another human species may be taking its place in the long story of mankind ... discovered by DNA analysis of fossil bones and teeth found in a cave in southern Siberia (see pages 5-6).
 - Hard Rock Art. Take a look at ancient artwork cut into stone at five major locations in the U.S. (see pages 9-11).
 - Check out evidence of very early sea travel discovered recently on the island of Crete in the Mediterranean: handaxes and other stone tools from the Old Stone Age, perhaps made about 130,000 years ago. Ancient peoples travelled across the sea at a far earlier time than long thought (see page 12).
- Read, learn, find, enjoy. And pass it all along to your family and friends.

Our editorial objective is to help our readers become long-term, even serious collectors of arrowheads, over the years to come. Here are some of the things we hope to accomplish for you in this process:

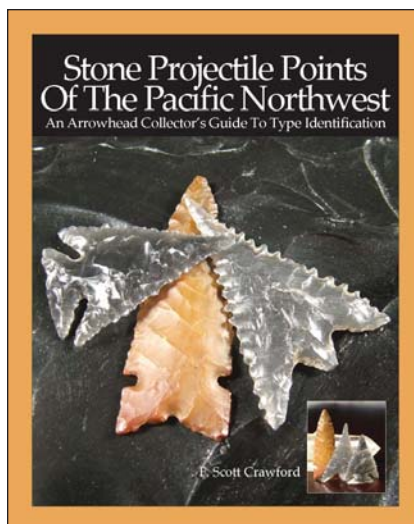
- Help you find new points and understand what it is that you are finding;
- Help you to recognize the different kinds and styles of collectable arrowheads and other implements;
- Help you to understand about the life ways of the cultures represented by the stone tools which remain;
- Help you to discover ways to find good and desirable arrowheads from other sources, such as eBay and special subject web sites;
- Help you understand about modern flint knapping, how new points and implements are made, how to recognize them, and how to appreciate those items for the skill and the craftsmanship of the work which they exhibit;
- Help you to understand that some people still try to sell unsuspecting collectors items which may or may not be what the items are described to be, that you should be careful when you think about buying points for your collection;
- Help you to learn about authentication services and their value to you as a collector.

As we do these things, we will maintain your readership and interest in our newsletter for many years to come.

Thank you for your participation, and your interest in "Arrowhead Collecting On The Web".

Sincerely,

F. Scott Crawford
Carrollton, Texas



When you want to know how to identify the ancient Indian (native American) stone arrowheads which you and your family may find in the Pacific Northwest, read the new book:

Stone Projectile Points Of The Pacific Northwest
An Arrowhead Collectors' Guide To Type Identification

This 144 page book is now available online at www.Amazon.com, ISBN number: 1453798471; or directly from the publisher through the web site:

www.BlackRockPublishing.com

Member AACA



Authentic Artifact Collectors Association

© 2010. All Rights Reserved.
www.ArrowheadCollectingOnTheWeb.com
F. Scott Crawford, Carrollton, Texas



About The Author

From the time when I was 13 or 14 in the forested foothills of the western Oregon Willamette Valley and found my first arrowhead, an obsidian "bird point," in a field my dad had plowed for an experimental crop of maize, I have always wondered about the people who used these stone tools, how they lived, and what became of them.

Some friends had collected Indian artifacts in the desert areas of eastern Oregon and my brothers and I all enjoyed looking at their display of those arrowheads. So, to find some points of our own, on the family land, was particularly exciting. After that, whenever we were working in the bean fields, or tending livestock, or moving irrigation pipes, or just wandering across the back 40, we always would keep an eye out for bits and pieces of worked stone, tools and points, to add to our growing collection.

Today, I still keep an eye out for remnants of past cultures. And as the world has changed so much, I can now do much, but not all, of that wandering and learning on the internet, on the world wide web. That's how I came to be collecting arrowheads on the web, and why I began to put together this newsletter, for others across the land who also are interested in "Arrowhead Collecting On The Web".

FSC

p.s. There is still a time and a place for criss crossing a plowed field, or walking along the banks of a stream, just to see what you might find. Knowing where to look and how, is part of what we plan to explore in the pages of "Arrowhead Collecting On The Web." Read, learn, find, enjoy.

p.p.s. You are invited to visit my flint knapping web site:
www.StoneBreaker-FSC.net

These are the representative point types which were requested and made for Kelvin O'Hara's exhibit in New Zealand: **Northwest Serrated Arrowhead** (Rogue River Gunther point, jasper or agate); **Dakota Barred Shoulder Arrowhead** (Avonlea point, Hixton quartzite or Knife River Flint); **California Long Point Arrowhead** (Stockton point, obsidian); **Georgia War Arrowhead** (Pinellas point, chert or flint); **Sioux Blunt Hunting Arrowhead** (a broken point, trimmed to be used as a "stunning" arrow for birds or rabbits, etc., not a sharp point); **Apache Triangular Arrowhead** (Chaco corner notched point, obsidian or agate).

Several Arrow Point Styles Among The Many Types Used By Native Hunters. Made From Traditional Materials Found In Different Regions Of The North American Continent.



Shumla style dart and, subsequently, an arrow point. Made from black "Edwards Plateau" flint from Texas. Found in Texas and Oklahoma. Dates to the "Woodland" period, from 3000 to 1000 years B.P., from the time of "atlatl" (a spear throwing tool) throwing darts until after the introduction of the bow and arrow. A small, base notched point, with convex, straight or recurved sides. Barbs usually extend to the base.

A so-called **Blunt** style arrow point, which was actually often a broken projectile point, with the fracture re-trimmed, and "recycled" as a hafted scraping tool, used to process animal hides, etc. Made from Flint Ridge flint, from Ohio. "Blunts" are found in all regions of the continent. Date from the Archaic period until to the "Mississippian" period, from 8000 to 350 years before the present (B.P.). Made from broken points, using the notches for binding onto a working handle, or purpose made, with or without notches.

Avonlea arrowhead. Made from orange silicified sandstone or quartzite, from North Dakota. One of the first true arrow points on the high plains of the central region of the continent. Dates to the "Late Prehistoric" period, from 1800 to 1230 years B.P. Found at bison kill sites. A small, thin, side notched point, with a wide concave base. The notches are close to the base.

Pinellas arrow point. Made from regional flints and cherts. Found in Gulf Coast states, such as Florida, Georgia, Alabama. Dates to the "Mississippian" period, from 800 to 400 years B.P., up until European contact. A small, narrow, thick to thin, triangular point, with a straight to concave base.

Stockton point, of obsidian. Found in Central Valley of California. "Developmental" to "Historic Phase", 1200 to 200 years B.P. Small to large size, thin, narrow, with exaggerated, squared barbs along the blade edges. May have been used as a saw as well as an arrowhead.

Gunther Barbed arrowhead, made from carnelian agate. Found in Oregon and northern California. "Developmental" to "Historic Phase", from 1000 to 200 years B.P. A small to medium, thin, broad, triangular arrow point. Long barbs often extend beyond the narrow stem. Straight to concave blade sides often serrated.

Chaco Corner Notched arrow point. Made from colorful "Bullseye Jasper" from Nevada. Found in the Desert Southwest states of Arizona, New Mexico, Colorado and Utah. Dates to the "Developmental" period, from 1250 to 1050 years B.P. In use by the ancestors of the Pueblo peoples of the Southwest, soon after the introduction of the bow and arrow. A small, thin, corner notched point, with a wide convex base. The deep notches often turn upward toward the tip.

e-Mail Letters:

January 3, 2011

Hello,

My name is John Fletcher and I am an avid rock hound and stone jewelry maker. Recently I was hunting for jasper in the Mojave Desert and came across a beautiful, colorful jasper hand tool and I was wondering how do I find out about its value? Thank you in advance for your help. Sincerely,

John Fletcher

January 3, 2011

Hi John,

Thanks for your note. Do you have a digital photo of the jasper tool which you found? That would be a beginning to chasing down a possible value.

Scott

January 9, 2011

I apologize for the confusion! My son is helping me figure out how to work my email. Anyways, I have attached 3 photos of the tool I found. Let me know what you think of it!

John Fletcher

January 9, 2011

Hi John,

That's a beautiful jasper tool. How large is it? What are its length and width, and thickness? It looks fairly thick, judging from the angles of the chips removed around the edges. It could be a cutting or chopping tool in its own right, or it could be a core from which other smaller pieces were being removed and made into points or other small tools. It appears to have been exposed to wind and sand blowing in the desert, since it looks somewhat polished. Are both faces the same or is one side more glossy than the other? That is usual, a difference, if a piece has been laying on one side in a desert environment. I imagine that the stone itself caught your attention, if you are in to stone jewelry making. It would sure catch my eye out in the desert, or in a wetter area. As to value, I will show it in the e-magazine this month and see what anyone says. There are several authenticators who might be able to give you an opinion. You could send it to one of them who specializes in Western artifacts, like Ben Stermer in Phoenix.

Scott

January 10, 2011

Hi Scott,

This is such a colorful piece of jasper that if it wasn't a tool it would make some very beautiful jewelry. As for the measurements, it's 2-3/4" wide by 3-1/4" long by 1" thick and does have some weathering on one side. I really appreciate your interest in this tool. I think putting it in your magazine is a great idea and will probably get some responses.

Thanks, again,

John

January 10, 2011

Hi John,

Thanks for the dimensions. That will be helpful in considering the purpose of this tool. At that size it probably started out as a core for removing smaller pieces for points, etc., and ended up as a chopping/cutting tool for processing plant material and other food stuffs, like a heavy duty knife.

Thanks,

Scott



Very colorful jasper chopper/heavy duty knife, found in the Mojave Desert by John Fletcher. Shown here at actual size, 2-3/4" wide by 3-1/4" long and 1" thick.

Publisher's e-mail address:
fscottcrawford@
arrowheadcollectingontheweb.com

Neanderthals We Know About, And The Short Island People In Indonesia, Descendants Of Java Man; Now A Possible New Line Of The Human Family Is Found ... In Siberia Of All Places.

By PAUL RINCON

Science Reporter, BBC News

Scientists have identified a previously unknown type of ancient human through DNA from a finger bone unearthed in a Siberian cave.

The extinct "hominin" (human-like creature) lived in Central Asia between 48,000 and 30,000 years ago.

An international team has sequenced genetic material from the fossil showing that it is distinct from that of Neanderthals and modern humans.

Details of the find, dubbed "X-woman", have been published in *Nature* journal.

Ornaments were found in the same ground layer as the finger bone, including a bracelet.

Professor Chris Stringer, human origins researcher at London's Natural History Museum, called the discovery "a very exciting development".

"This new DNA work provides an entirely new way of looking at the still poorly-understood evolution of humans in central and eastern Asia."

The discovery raises that intriguing possibility that three forms of human - *homo sapiens*, Neanderthals and the species represented by X-woman - could have met each other and interacted in southern Siberia.

The tiny fragment of bone from a fifth finger was uncovered by archaeologists working at Denisova Cave in Siberia's Altai Mountains in 2008.

An international team of researchers extracted mitochondrial DNA from the bone and compared the genetic sequence with those from modern humans and Neanderthals.

Origin unknown

Mitochondrial DNA comes from the cell's powerhouses and is passed down the maternal line only.

The analysis carried out by Johannes Krause from the Max Planck Institute for Evolutionary Anthropology in Leipzig, Germany, and colleagues



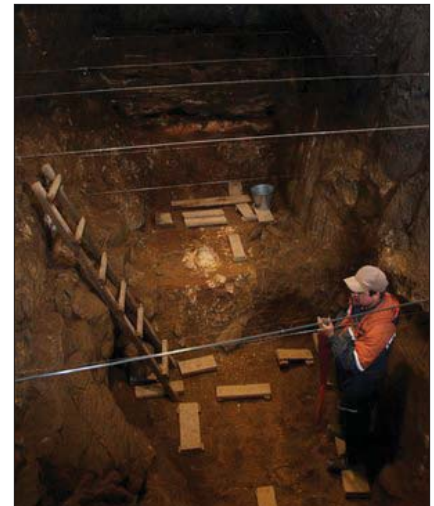
An international team has sequenced genetic material from a "hominin" that lived in Central Asia between 48,000 and 30,000 years ago, showing that it is distinct from that of Neanderthals and modern humans.



"Whoever carried this mitochondrial genome out of Africa about a million years ago is some new creature that has not been on our radar screens so far"
Svante Paabo
Max Planck Institute for Evolutionary Anthropology

revealed the human from Denisova last shared a common ancestor with modern humans and Neanderthals about one million years ago.

This is known as the divergence



The finger bone from which ancient DNA was extracted, was unearthed in 2008 at Denisova Cave in southern Siberia's Altai Mountains.

date; essentially, when this human's ancestors split away from the line that eventually led to Neanderthals and ourselves.

The Neanderthal and modern human evolutionary lines diverged much later, around 500,000 years ago. This shows that the individual from Denisova is the representative of a previously unknown human lineage that derives from a hitherto unrecognized migration out of Africa.

"Whoever carried this mitochondrial genome out of Africa about a million years ago is some new creature that has not been on our radar screens so far," said co-author Professor Svante Paabo, also from the Max Planck Institute for Evolutionary Anthropology.

The divergence date of one million years is too young for the Denisova hominin to have been a descendant of *Homo erectus*, which moved out of Africa into Asia some two million years ago.

And it is too old to be a descendant of *Homo heidelbergensis*, another ancient human thought to have originated around 650,000 years ago. However, for now, researchers have steered

(...continues on p. 6)

away from describing the specimen as a new species.

Dr. Krause said the ground layer in which the Denisova hominin fragment was found contains tools which are similar to those made by modern humans in Europe.

Slice of time

"We have ornaments, there is a bracelet, so there are several elements in the layers that are usually associated with modern human archaeology," he told BBC News.

"That's quite interesting, but of course, it is hard to prove that the bone is strongly associated to this archaeology, because it is possible that bones could have moved within the site.

"We are also not sure how exactly the excavation was done. It could have come from a deeper layer, so that's hard to say."

Professor Clive Finlayson, director of the Gibraltar Museum, said the find presented a number of questions, such as to what extent culture could continue to be used as a proxy for different prehistoric human groups.

Referring to his research on Neanderthals and modern humans in southern Iberia, he told BBC News: "The assumption is that when one group - the moderns - arrives the other group disappears. Here you have a very clear example of co-existence for long periods.

"Where is the rule that says you can have only one species in an area? Especially if they're at low density ... the implications are big."

The research contributes to a more complex picture that has been emerging of humankind during the Late Pleistocene, the period when modern humans left Africa and started to colonise the rest of the world.

Professor Finlayson has previously argued: "A time slice at a point in the late Pleistocene would reveal a range of human populations spread across parts of Africa, Eurasia and Oceania.

"Some would have been genetically linked to each other, behaving as sub-species, while the more extreme populations may well have behaved as good species with minimal or no interbreeding."



Undated photos provided by the journal Nature show views of an upper molar tooth found in a Siberian cave from a recently discovered relative of humans that lived more than 30,000 years ago. DNA revealed that this creature is more closely related to Neanderthals than to modern humans. That indicates that both this creature and Neanderthals sprang from a common ancestor on a different branch of the family tree than the one leading to modern humans.



It was long known that modern humans overlapped with Neanderthals in Europe, apparently for more than 10,000 years.

But in 2004, researchers discovered that a dwarf species of human, dubbed "The Hobbit", was living on the Indonesian island of Flores until 12,000 years ago - long after modern humans had colonised the region.

Difficult classification

Neanderthals appear to have been living at Okladnikov Cave in the Altai Mountains some 40,000 years ago. And a team led by Professor Anatoli Derevianko, from the Russian Academy of Sciences, has also found evidence of a modern human presence in the region at around the same time.

Professor Stringer commented: "Another intriguing question is whether there might have been overlap and interaction between not only Neanderthals and early moderns in Asia, but also, now, between either of those lineages and this newly-recognized one.

"The distinctiveness of the mitochondrial DNA patterns so far suggest that there was little or no interbreeding, but more extensive data will be needed from other parts of the genome, or from the fossils, for definitive conclusions to be reached."

Experts have been wondering whether X-woman might have links with known fossil humans from Asia, which have controversial classifications.

"Certain enigmatic Asian fossils dated between 250,000-650,000 years ago such as Narmada (in India), and Yunxian, Dali and Jinniushan (in China) have been considered as possible Asian derivatives of *Homo heidelbergensis*, so they are also potential candidates for this mystery non-*erectus* lineage," said Professor Stringer.

"However, there are other and younger fragmentary fossils such as the Denisova ones themselves, and partial skulls from Salkhit in Mongolia and Maba in China, which have been difficult to classify, and perhaps they do signal a greater complexity that we have appreciated up to now."

Other experts agree that while the Siberian specimen may be a new species, this has yet to be shown.

"We really don't know," Ian Tattersall of the American Museum of Natural History in New York, told the Associated Press news agency.

Dr. Tattersall, who wasn't involved in the new research, added: "The human family tree has got a lot of branchings. It's entirely plausible there are a lot of branches out there we don't know about."

“If You Are Ever In Southern Maryland And You See Some Guy In Rubber Boots Doing An Indian War Dance ... Well, You’ll Know I Found Something Special.” --Michael Lundmark

November 15, 2010

Hello Mr. Crawford.

I really enjoy your newsletter, thank you so much for making it available. I may have something to contribute. If you could offer me some guide lines, I would like to present my finds in your publication. I have been hunting (hard) for the last 6 years. I have accumulated over a thousand artifacts. Many are just rocks to most people, but I feel they have signs (evidence) of being shaped by a human for some purpose. I have also found around five hundred arrowheads and spears. Some just pieces, stems, tips, shafts etc. But some are very nice, complete and not so ordinary.

Please find attached some .jpegs of my finds. Please let me know what I can do to improve my photos if you would like to make a story of my finds. I am looking forward to hearing from you. Thank you.

Michael Lundmark

Maryland

November 15, 2010

Hello Michael,

Thanks for your letter. I will take a look at your photos and see about using some in the next issue. I will get back to you with any suggestions or questions which come up. One thing that I am sure of is that some information about where you have collected, without technical location, but general information will be useful; and any particular stories which are relevant to a specific find which may be a favorite. Again, thanks for your participation.

Scott Crawford

November 15, 2010

Thank you for your reply. I put this together real quick. I’m sure you can make it nicer. I would like to include additional pictures of my best finds as soon as I can take some decent pictures of them. Please find attached a pdf of a short bio of sorts.

Michael



I started hunting for shark teeth in Calvert County MD about ten years ago. And although I have found over a thousand prehistoric shark teeth from the Calvert Cliffs area, the excitement when I came upon my first arrowhead was something to behold.

Have you ever seen a 50 year old white man in rubber boots do an Indian war dance? Well that’s been my trademark since then. When I find an outstanding arrowhead or spear I give out a few whoops and hollers and dance to the pow wow drum in my head. Then I give thanks to the great spirit chief for guiding me to this ancient artifact. You would not believe how many times I have found an arrowhead next to a fresh footprint. I am glad most people do not know they are walking on sacred hunting grounds. The evidence of primitive people abounds if you know where to look.

I am the Potomac riverside hunter and gatherer of ancient artifacts. There are a couple of farmers’ fields

in southern Maryland where I have permission to hunt as well, but mostly I walk the Potomac River’s edge, from Washinton, DC, to southern Maryland. I know there were about four very large Piscattaway Chiefdoms from Ft. Washington, MD down to Nanjemoy, MD, but a majority of my finds pre-date these civilizations. I believe a lot of the tools I find are Paleo Indian culture.

The Overstreet book of arrowheads has an East Coast section, but I do not recall seeing anything from southern Maryland. I would like to open my collection for a viewing of the ancient artifacts of southern Maryland. I hope everyone finds it as interesting as I do.

American Indian artifact hunting has become my life’s quest. So, if you are ever in southern Maryland and you see some guy in rubber boots doing an Indian war dance...well, you’ll know I found something special. My name is Mike Lundmark. If you introduce yourself, I’ll show you what I found.

(...continues on p. 8)



A lanceolate dart point of quartz crystal found in Maryland by Mike Lundmark. Shown here at actual size. Perhaps an Ohio Lanceolate from the transitional Paleo period.



APPALATIAN _ Mid Archaic, 6000 - 3000 B.P.

An Ohio Lanceolate point, right, from the Transitional Paleo period at the end of the Paleo Indian and into the early Archaic period, about 10,500 to 8000 B.P. On the left, an Appalachian point, from the Archaic period, 6000 to 3000 B.P. Both of these points appear to be made of quartzite. Actual size.



A quartzite dart point from Maryland. It is probably another Appalachian point from the middle Archaic. Actual size.



Various impliments and tools found by Mike Lundmark in one day, exploring southern Maryland.

Five Great Places To See Native American Rock Art.



by Sean McLachlan

I often hear people saying the U.S. has a short history. Actually it's as ancient as anywhere else. Before the Europeans took over this land there were hundreds of Native American cultures living here. Some have survived; others have disappeared. One of the most evocative reminders of their civilizations is the rock art of the American Southwest. Here are five good places to see some.

Canyonlands National Park, Utah

The stunning landscape of this park is the main draw, but hidden amidst the colorful mesas and canyons are numerous petroglyphs (carving in rock) and pictograms (paintings on rock). The best are in Horseshoe Canyon, where a large

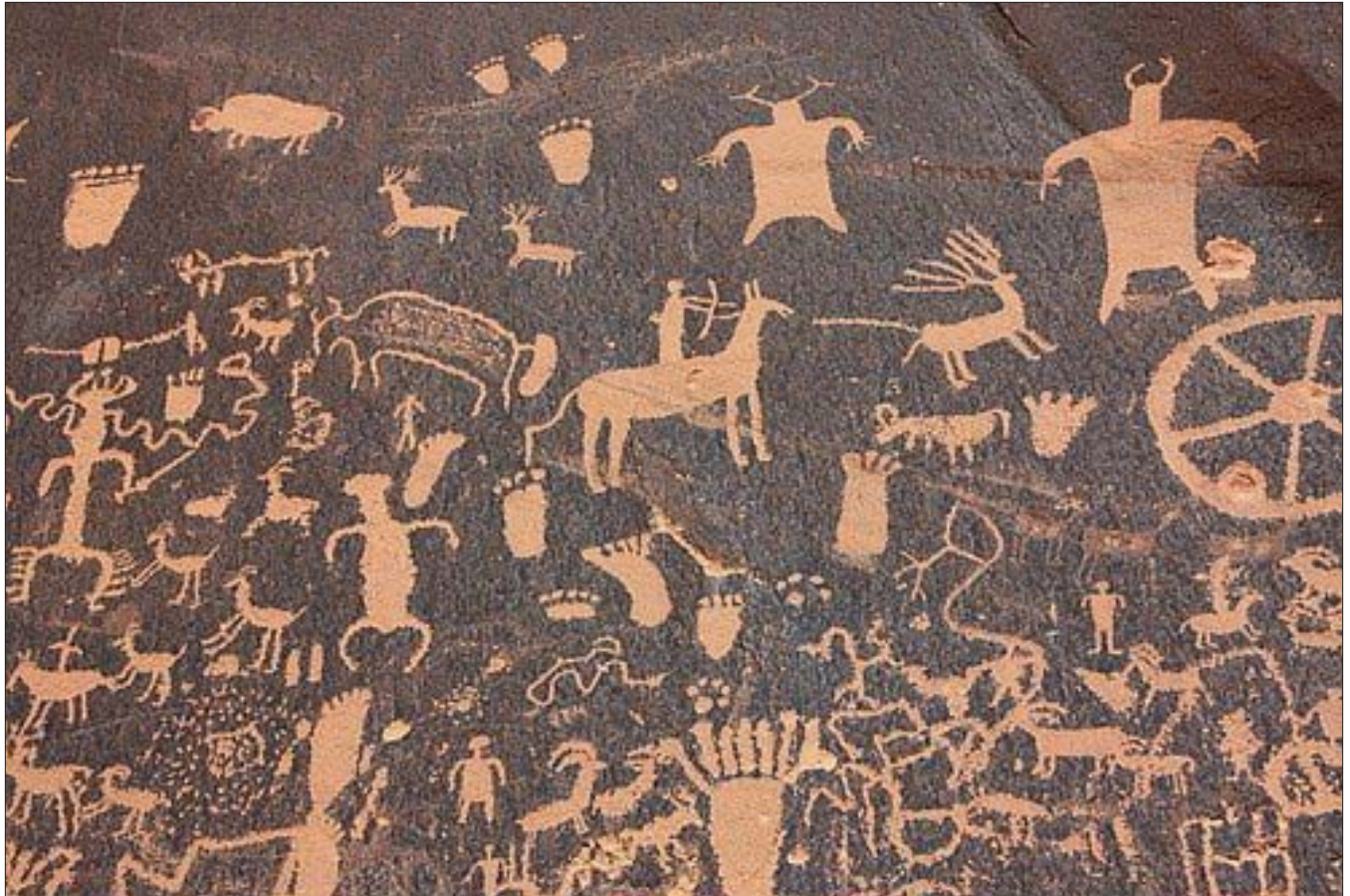
panel of ghostly painted figures have been variously interpreted as gods, ancestors or, by the scientifically challenged, aliens. They date to as far back as 2000 BC.

Nine Mile Canyon, Utah

One of the best sites for petroglyphs in all the Southwest is billed as the "world's longest art gallery". With about 10,000 images



Animals at Canyon de Chelly National Monument, Arizona. Photo from National Park Service.



*"Newspaper Rock" in Canyonlands National Park, Utah. Photo by boo*radley via Gadling's flickr pool.*

ranging in date from 950 AD to the 1800s, it is the biggest concentration of rock art ever found in the U.S. The remains of the homes of the Fremont people are clearly visible when hiking the canyon. The images include bison being stuck with spears, strange horned figures that may be shamen, and men on horseback dating to the historic period.

Saguaro National Park West, Arizona

The rock art here isn't as grand as the other places on the list, but it's far more accessible. Just a short drive from Tucson and only two hours from Phoenix, the park takes its name from the forest of giant saguaro cacti that grow here. There are two parks--one to the west and one to the east of town--



Arizona rock art such as at Saguaro National Monument near Tucson, Arizona. Photo by Charro Badger.

and the one to the west has a rocky hill covered in carvings made by the Hohokam people. The most unusual is a strange spiral that may have been an early calendar. The Hohokam built large towns and extensive canal systems in southern Arizona until about 1450 AD. In fact, the modern cities of Phoenix and Tucson were founded by the Hohokam!

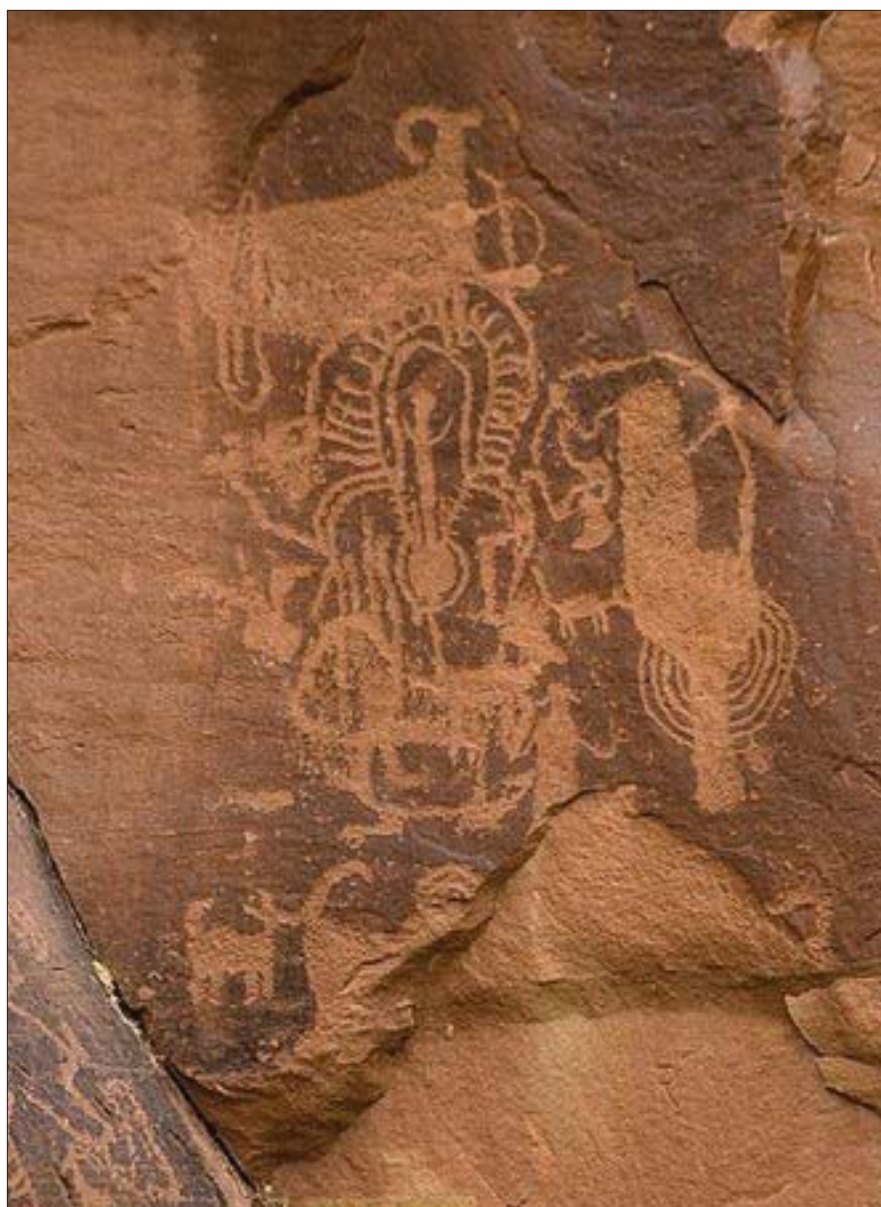
Petroglyph National Monument

Another easily accessible location, this national monument is right on the western edge of Albuquerque. You can see just how close from the lead photograph in this article, courtesy Daniel Schwen. There are about 24,000 images here, mostly from prehistoric Pueblo peoples starting about 500 AD, but also some made by Spanish settlers who saw all the pictures on the rocks and decided to add their own. Some are even the cattle brands of the early ranchers.

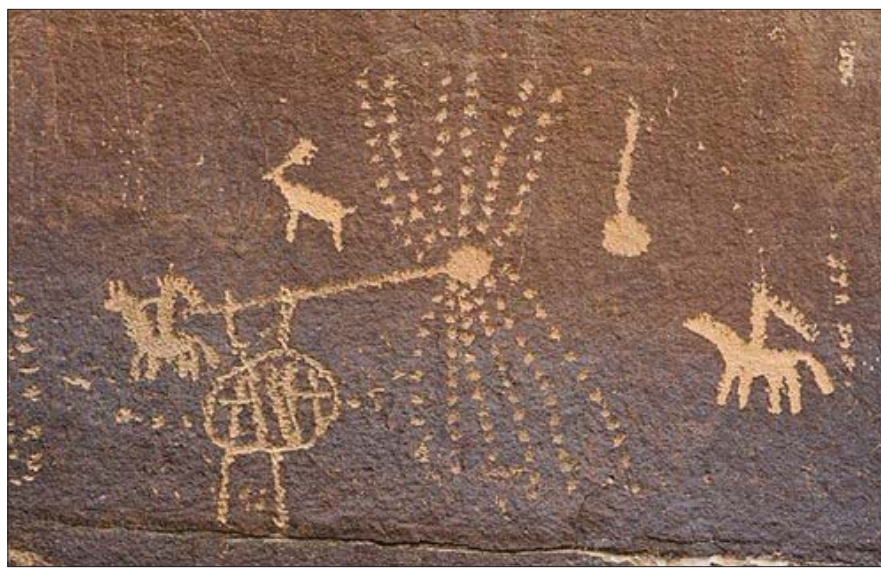
Canyon de Chelly National Monument, Arizona

Located in the heart of the Navajo Nation, prehistoric peoples built extensive villages here in the shadows of towering cliffs until their mysterious disappearance in the 14th century. As you wander the trails you'll see petroglyphs of animals and people scattered about the rocks. If you have kids, playing "spot the picture" can be a fun way to keep them entertained. The jaw-dropping scenery will probably do that anyway. Note that the interpretive center is closed for remodeling until May 2011.

While desert scenes aren't exactly the first thing you think of during the Christmas season, winter is a good time to explore these sites. The scorching sun takes a vacation, and in the higher altitude the desert can be downright cold!



Petroglyphs from Nine Mile Canyon in Utah. Photographs by jkiel via Gadling's Flickr pool.



Evidence Of Early Seafaring By Old Stone Age Humans: 130,000 Year Old Tools Found On The Mediterranean Island Of Crete.



A photograph provided by the Greek Ministry of Culture shows stone tools found on Crete. Greek and American archaeologists on the island say the tools, which they believe are at least 130,000 years old, show that early humans could navigate across open water thousands of years earlier than previously thought. (Greek Culture Ministry)



This undated hand out photo provided by the Greek Culture Ministry on Monday, Jan. 3, 2011, shows an Early Stone Age axe discovered by a US-Greek team of archaeologists on the southern island of Crete. A ministry statement said Monday that this and other similar finds, dating back at least 130,000 years, point to what may be one of the earliest signs of human seafaring. (AP Photo/Greek Culture Ministry)



Preveli Beach in Crete, near one of two places where the various Old Stone Age tools were found in 2008 and 2009.

I Found This Arrowhead On The World Wide Web™

You can do it, too. Every month in "Arrowhead Collecting On The Web" we show you how your mouse can do the searching on the world wide web. We bring you information and links to on-line sources of authentic, ancient arrowheads. We talk about how to tell if an arrowhead is ancient, or if it's a modern reproduction. We give you links to reputable authenticators who can provide experienced, scientific examinations of arrowheads to verify and certify the authenticity of stone points and other tools you collect, buy or trade for. I found the ancient arrowhead, shown here, through a friend on the world wide web, although it was originally found near Shady Cove in Jackson County of southern Oregon in the 1960's by Harvey Huber. I purchased it in July, 2010.

Harvey Huber found this expertly made, completely opaque, red jasper Rogue River style "Gunther" arrowhead in the place where it was last used, abandoned or stored away and forgotten. Now, any collector can tell you that there are times when you will want to wander the fields and streams yourself. So, every month, in the pages of "Arrowhead Collecting On The Web", we also provide articles and photographs to show you how to effectively look for and find ancient arrowheads and other stone tools for your collection. We also share stories by readers across America who write about and photograph their own, personal finds. Don't miss a single article each month in **Arrowhead Collecting On The Web.**



Actual size:
1-3/16" x 3/4"



Arrowhead Collecting On The Web™

e-Mail Letters:



December 5, 2010

Hi Scott,

Thanks for your e-magazine every month. I look forward to each new edition.

I grew up looking for and collecting rocks; and have become interested in lithic relics.

Would you look at some of my finds and let me know what you think?

Thanks,

John Keene

January 2011

Hi John,

Thanks for sending the photos of these arrowpoints. They are in very nice shape and made out of an interesting looking chert. Just guessing, it looks like Keokuk or Burlington Chert. The essential



information which is missing is the region where they were found. This would help identify them.

(As a note to other readers, this can help us all to share photos of artifacts and to see what is found in other areas of the continent, as well as aid in artifact identification.)

Sincerely,

Scott Crawford

January 3, 2011

Hello,

I found the attached (photo above) in the Santa Cruze Mountains of California - do you know of someone who could give me a estimate of its value?

Thanks,

Hector

January 2011,

Hello Hector,

Thanks for your photo of what looks like a knife blade found in the Santa Cruze mountains. It appears to be about 6" in length. And that is after the base is snapped off. Probably was discarded by the original owner when the blade broke. It was often easier just to replace a broken blade than to repair it, though it is difficult to tell if this apparent fracture would have been the first time the base broke off or a subsequent event after a previous re-basing of a broken blade. As far as a value, the condition of being broken would effect that. However, if it is a unique style, it could have some value even with the snapped

base. It appears to be a transparent obsidian, but it could also be a relatively recently made blade knapped from glass. This would require some inspection and material identification. If you wanted to get a serious opinion, you might send it to one of the authenticators listed in the back of this emagazine. It is indeed a nice knife. Thanks for your interest and participation.

Scott

EXCHANGE Listing Number One:

"I live near Portland, Oregon and am interested in finding places within a day's drive that are available (and can provide owner's permission) to hunt points. I'm only interested in surface hunting and would only be walking and looking (no excavating). I'm especially interested in the lower Willamette Valley area, places in central Oregon or north to around the Seattle area. On an unreasonable whim, I might even fly to somewhere like Missouri for a weekend if someone would want to point me in the right direction. I'm open to information."

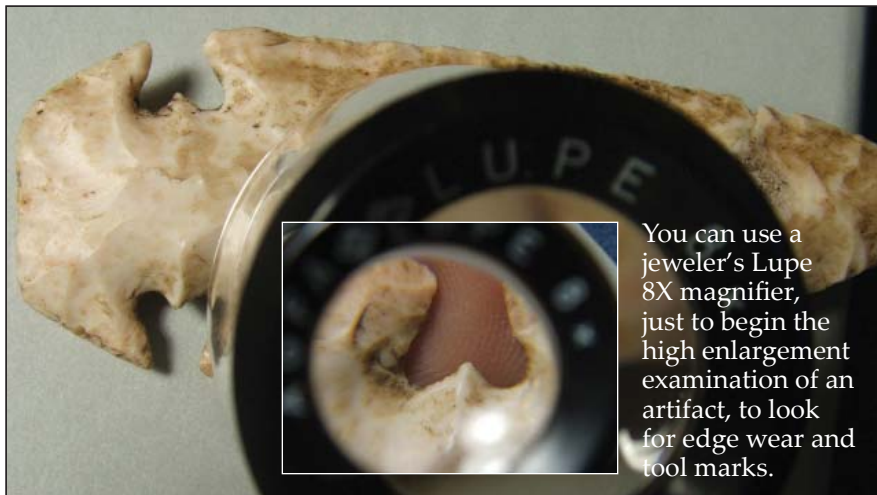
Kelly Griffin

office: 503-636-1754 cell: 503-969-5311

Names & Phone Numbers are listed in EXCHANGE, at the request of the reader. To contact by e-mail, send an e-mail to the publisher, with "EXCHANGE" in the subject line. Your e-mail request will be forwarded to the contact you identify by name.

Publisher's e-mail address:
fscottcrawford@
arrowheadcollectingontheweb.com

Artifact Authentication Services & Certificates Of Authenticity



You can use a jeweler's Lupe 8X magnifier, just to begin the high enlargement examination of an artifact, to look for edge wear and tool marks.

Authentication and evaluation services for artifacts from all over the world are available from a number of highly respected sources.

Some offer these services for regional items, since they specialize in Western, or South Western, or South Eastern, or North Central or North Eastern artifact types.

And most of the authenticators have web sites. Read up on their services, learn about their specialties, obtain pricing and timing information, and determine how to send items for authentication and evaluation.

Here are some well known and respected authenticators:

Dwain Rogers

Texas Flint Authentication
4102 Birch Avenue
Temple, Texas 76502
Telephone: 1-254-791-5520

Jeff Baker

Baker Authentication
www.BakerCOA.com
P.O. Box 772
Paragould, Arkansas 72451
Telephone: 1-870-239-9722

Bill Jackson

Jackson Galleries
www.JacksonGalleries.com
P.O. Box 1005
Mount Sterling, Kentucky 40353
Telephone: 1-800-466-3836
Fax: 1-859-499-0160

Tom Davis

Davis Artifacts, Inc.
www.TomDavisArtifacts.com
P.O. Box 676
Stanton, Kentucky 40380
Telephone: 1-606-663-2741

Ben Stermer

Western Typology
www.WesternTypology.com
44207 W McClelland Dr.
Maricopa, Arizona 85238
email: BSte122241@aol.com

Jeb Taylor

Jeb Taylor Artifacts
P.O. Box 882
Buffalo, Wyoming 82834
Telephone: 1-307-737-2347

Ken Partain

www.kensrelics.com
7044 Market Street
Dover, Arkansas 72837
Telephone: 1-479-331-3486

Sam Cox

www.SamCoxArtifacts.com
968 Floyd Drive
Lexington, Kentucky 40505
Telephone: 1-859-351-5675

Old Stone Age
Handaxe (Paleolithic),
age 200,000+/- years.



<http://www.Stormbroek.com>

A European artifact gallery,
which offers quality antiquities
from all historic eras, and all
areas around the world.
eBay Store: Stormbroek

Scottsbluff Spear
Point, late Paleo, early
Archaic period, age
8,000 to 10,000 years.



eBay store: SWArkArtifacts
eBay ID: "razrbk"

Dealer located in Arkansas, features
authentic artifacts from the south/central
United States, many with Certifi-
cates of Authenticity.
eBay Store: SWArkArtifacts

Whatcha Got There?

I have enjoyed finding arrowheads and other artifacts over the years. Yet, I always wondered if there was an effective way to identify the types of points which I found? Beyond guessing? After much reading, studying, contemplating and analyzing the information which is available about dart and arrow point identification, and studying the descriptions of many different types, I put together a short list of questions which enables me to compile a description of a projectile point.



*Actual size of this projectile point:
1-1/4" x 13/16"*



From this description, I can focus the answers to narrow down the type classification possibilities for any particular stone projectile point from this wonderful region.

"Stone Projectile Points Of The Pacific Northwest"

uses this series of questions and answers to illustrate clearly the identification process for several dozen projectile points in my collection. You can use the same process to identify most of the points you find in the Pacific Northwest.

This is how "Stone Projectile Points Of The Pacific Northwest" is An Arrowhead Collector's Guide To Type Identification.

"Now You Can Know"



F. Scott Crawford
Collector since 1962.
Publisher of the
monthly e-magazine:

ACOTW
*Arrowhead Collecting
On The Web*

Stone Projectile Points
Of The Pacific Northwest

PNW
*An Arrowhead Collector's
Guide To Type Identification*

ISBN-10: 1-45379-847-1
\$39.95

© 2010. All Rights Reserved.
F. Scott Crawford, Carrollton, Texas, USA.

For additional information about the publisher's new book,
"Stone Projectile Points Of The Pacific Northwest",
you are invited to visit the informative web site:
www.BlackRockPublishing.com